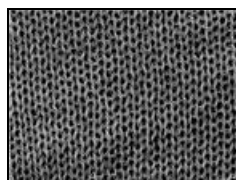


E.Miroglio

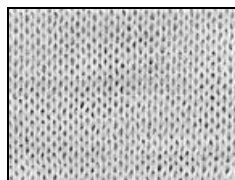
Cod.54202

Atlante

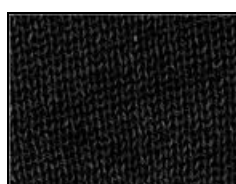
Nm 2/40



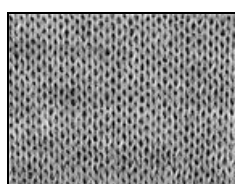
PD1
*



ØQ6



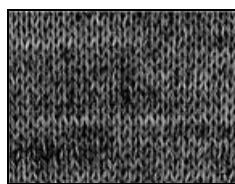
PD2



ØR1
*



PD3



ØS5
*



PD4
*



ØS6
*

* Colori pronti per campionatura.

* Colours ready for sampling.

Per i colori uniti fare riferimento alla cartella Merino Blend solid colours X1601.

For solid colours please refer to Merino Blend solid colour-card X1601.

E.Miroglio

Cod.54202

Atlante

Nm 2/40



LL6



LL4



1G8



LL7



ST2



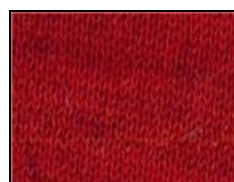
266



LL8



ST3



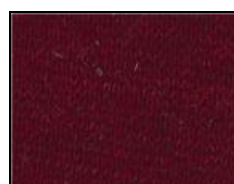
EE6



J74



ST5



EE7



LL9

*



ST6

*



PD5

I colori di questa cartella sono validi anche per i seguenti articoli:
The colours on this colourcard are valid also for the following qualities:

Anthea Nm 1/40 80%PC 20%WV Merino

La presente cartella valida dal 01-07-2014 annulla e sostituisce la precedente.
This colourcard cancels and replaces the previous one, and is valid from 01-07-2014.