



by EDOARDO MIROGLIO

Cod.56220

Melrose

Nm 2300



81E
*



80Z
*



8CM



8CJ
*



8CK
*



81R



81G
*



8CL
*



8CN



81F



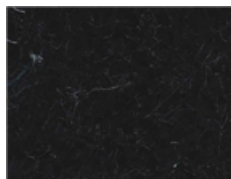
81N
*



8CO
*



81I
*



81S
*



81Q

* Colori pronti per campionatura.
I colori presentati in questi articoli non sono
riproducibili su altri filati.

* Colours ready for sampling.
The colours shown for this item can't be produced in
other yarns.