



SEM

Spring Summer 2025

The inspiration of the S/S collection 2025 is an imaginary journey composed by many destinations, worth sending evocative postcards from.

The trip starts in the spring, when the awakening of nature begins. Pack your suitcase and go on to the first destination named ONEIRIC: a dreamy and pearly world full of evanescent shades and flowers.

The second stop on the road map is ASIAN TRACES: surrounded by an elegant atmosphere, we will be walking through a beautiful ZEN garden, where nature will surprise us with lotus and peach flowers, sweet and fresh colors.

The journey continues while the season changes: the colorful EDEN gardens lead us into the summer season, when the sun shines and the mood is cheerful and happy.

Just in time for the next stop: the FANTASY world with vivid colors and fresh prints.

Then the sun goes down, leaving place to thousands of bright stars, and if we turn the eyes to the night sky, we can see METAVERSE: an iridescent blue, violet and celestial world that recalls futuristic landscapes.

The summer continues and we jump into the WILD: the focus of the season!

Roaring jungles full of exotic fruits and animals, bright shades of green and colorful big flowers: a real explosion of life.

And here we are, at the end of this magical journey: PRIMITIVE.

For the last part of the tour we have to return to the origin, where the colors of an uncontaminated nature and the warmth of the spices still paint the universe.

**From each side of the world, real or imaginary,
we try to seize the moment and bring along the
light of magic in our hearts, in our dreams,
in a suitcase or in a beautiful postcard.**

ONEIRIC

ASIAN TRACES

SEM PLUS

EDEN

FANTASY

ESTATE 2025

METAVVERSE

WILD LAND

PRIMITIVE

ASIAN TRACES

ONEIRIC

EDEN

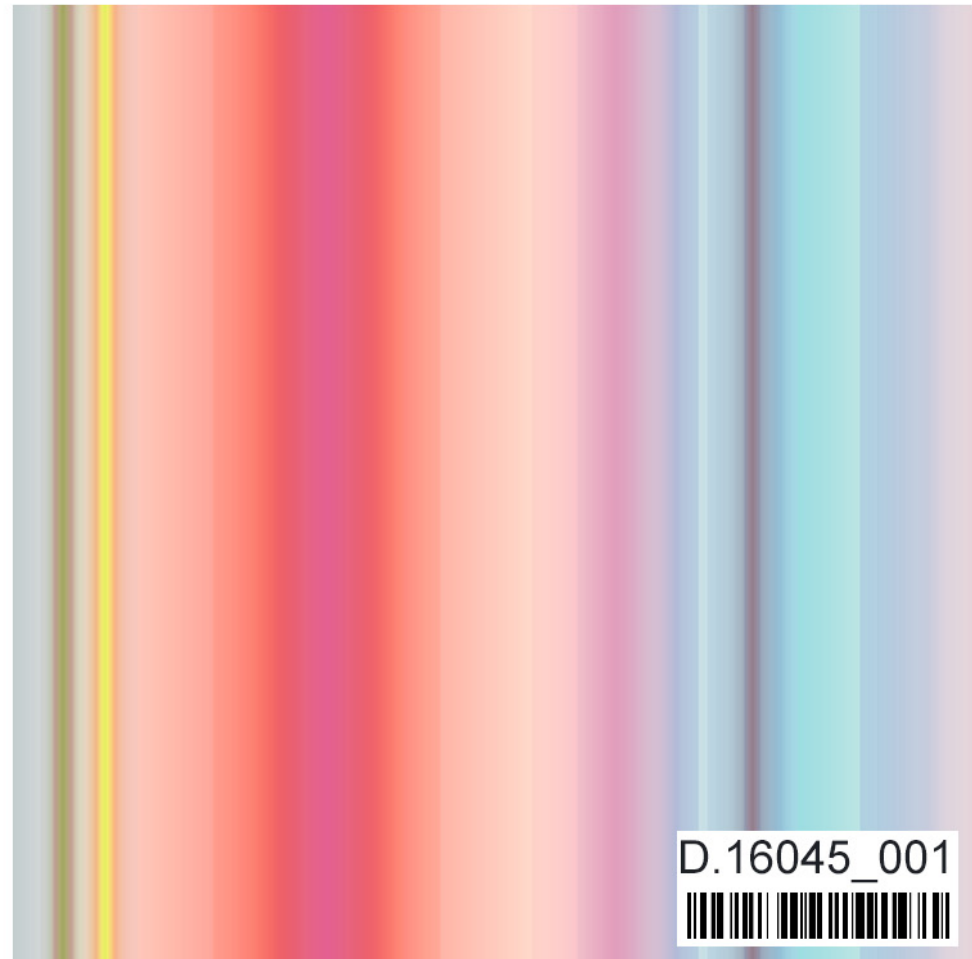
FANTASY

METAVVERSE

WILD LAND

PRIMITIVE

ONEIRIC

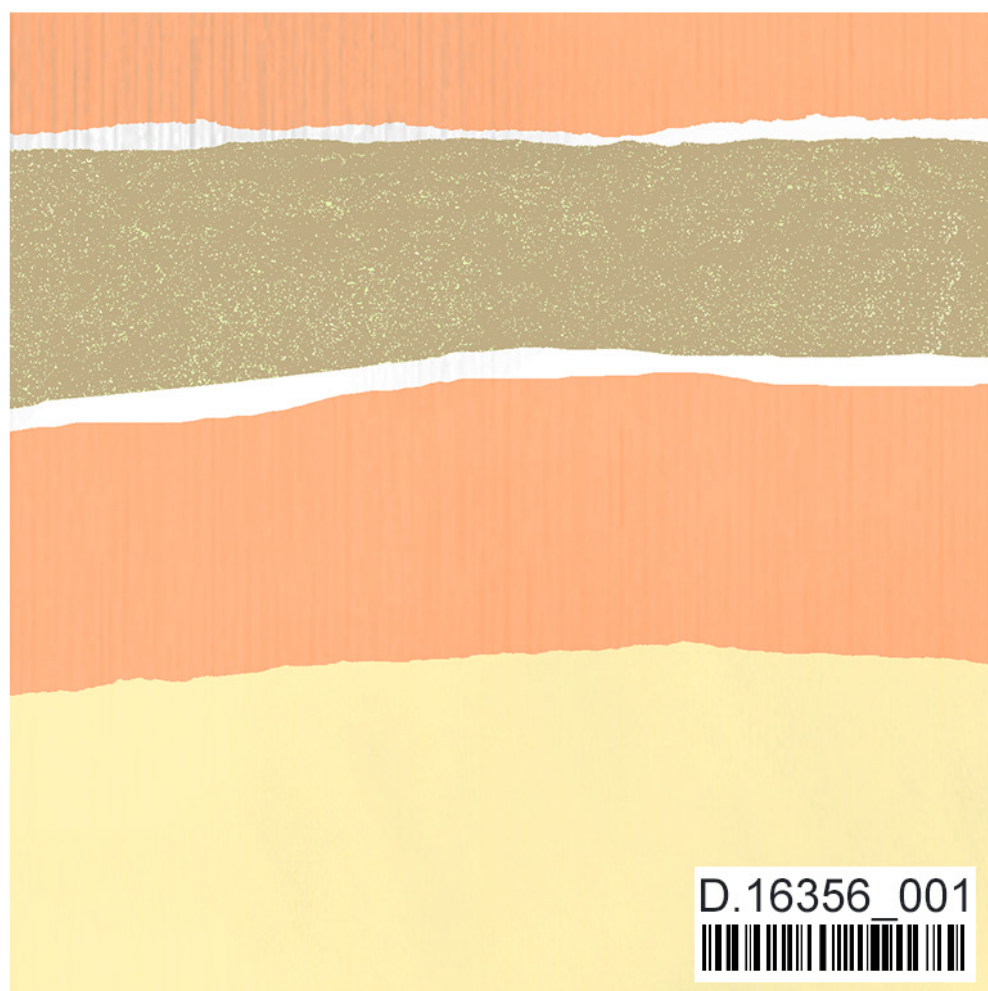


ASIAN TRACES

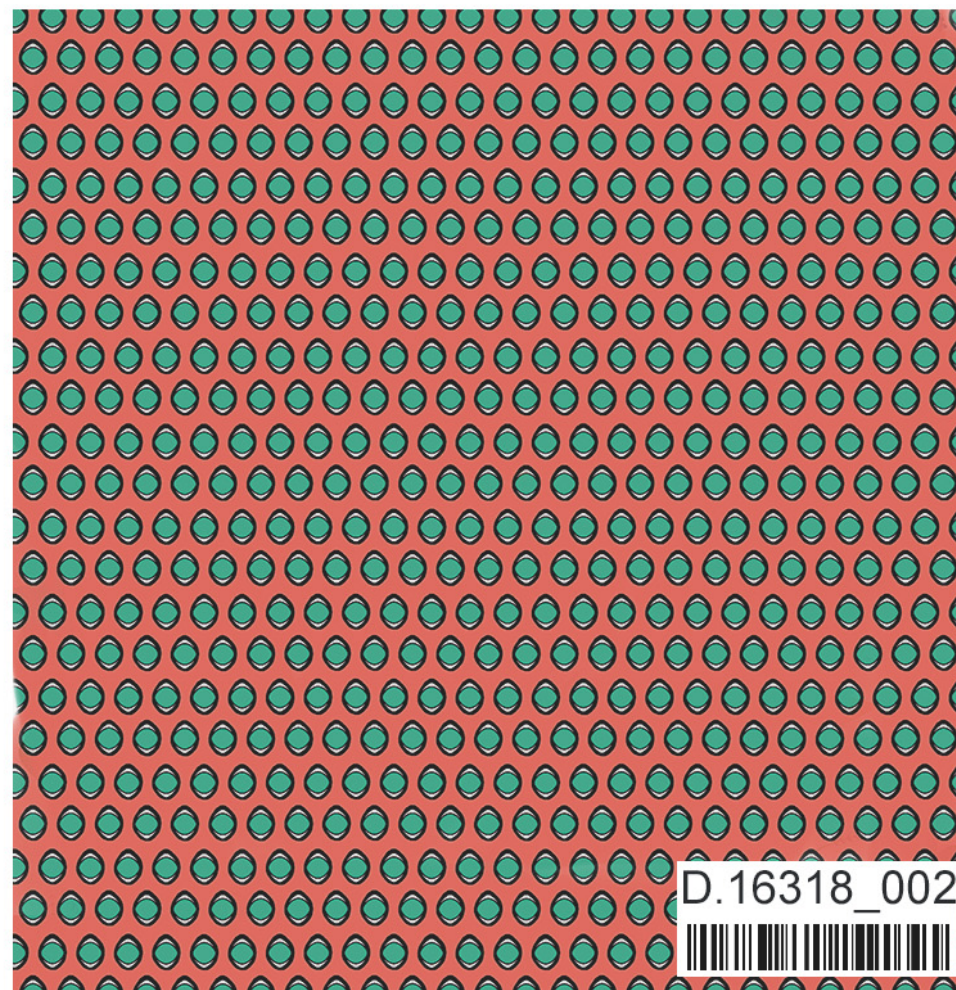




EDDEN



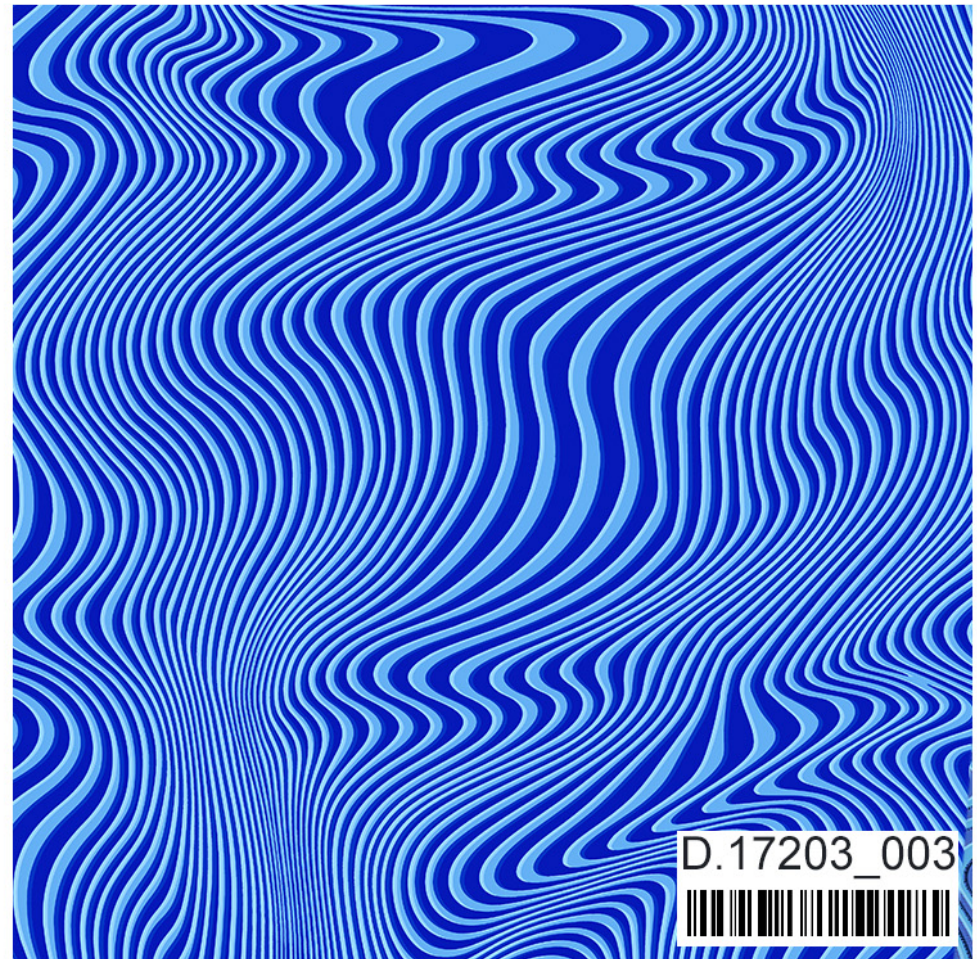
FANTASY



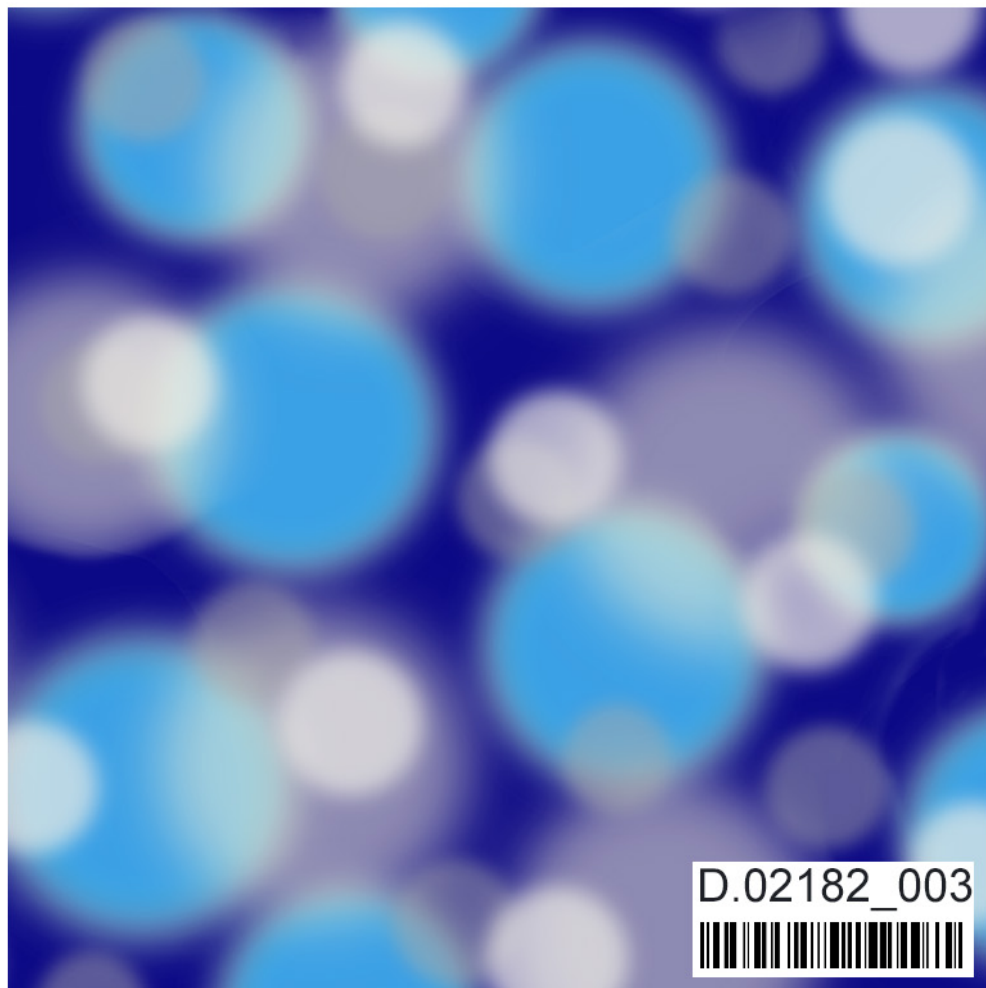
METAVERSIE



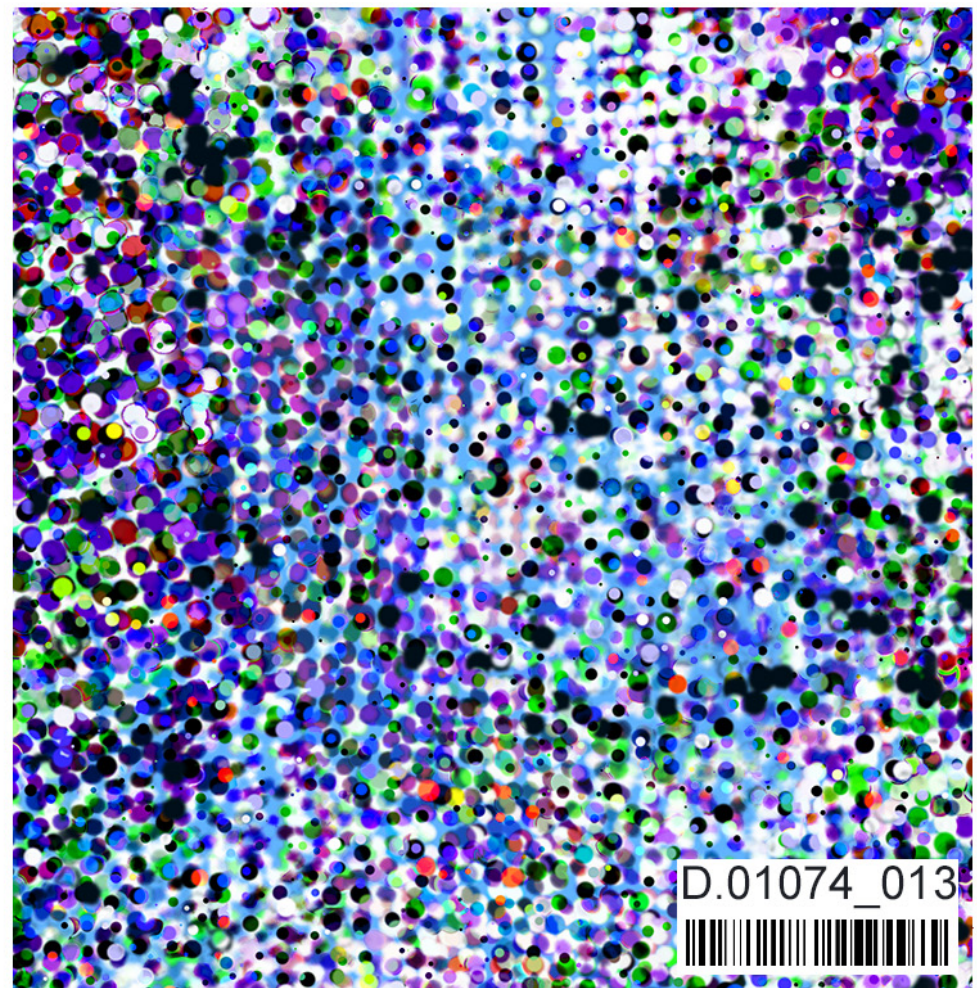
D.16322_003



D.17203_003



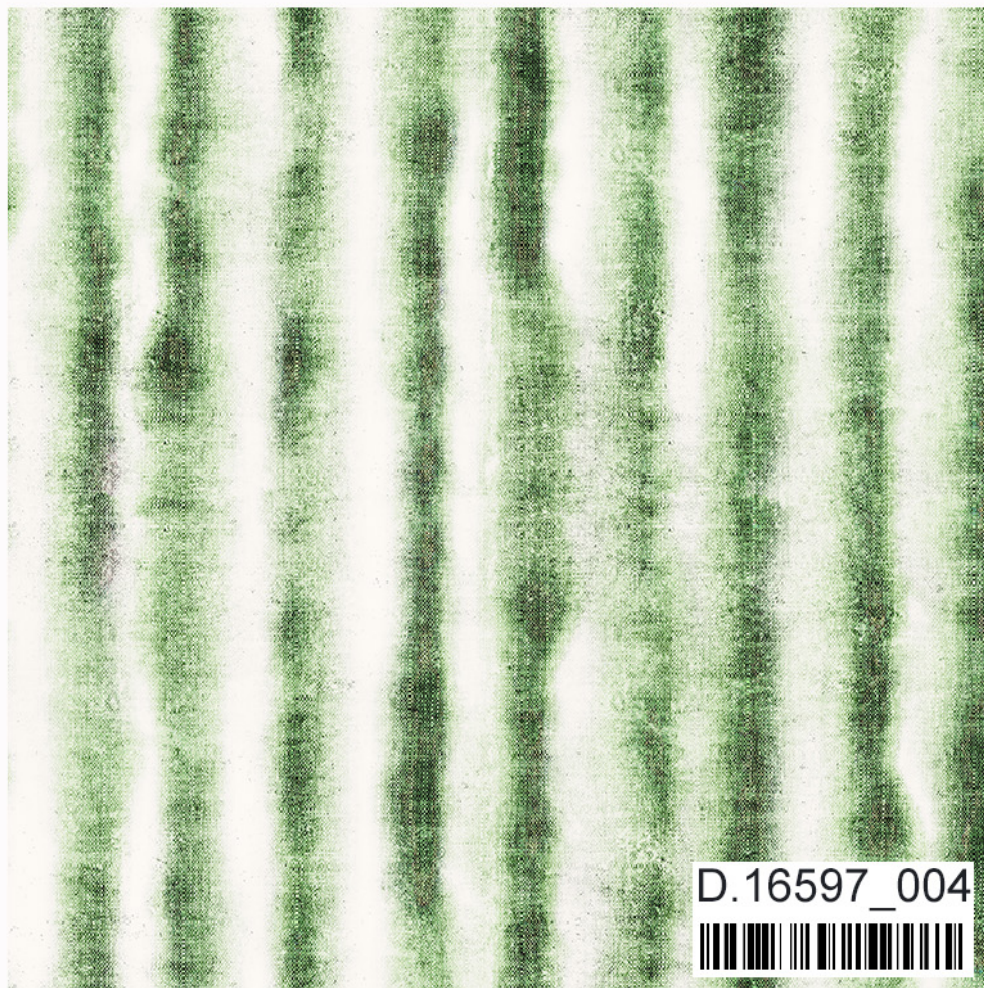
D.02182_003



D.01074_013



WILD LAND



PRIMITIVE





SEM
SPRING/ SUMMER
2025



SEM



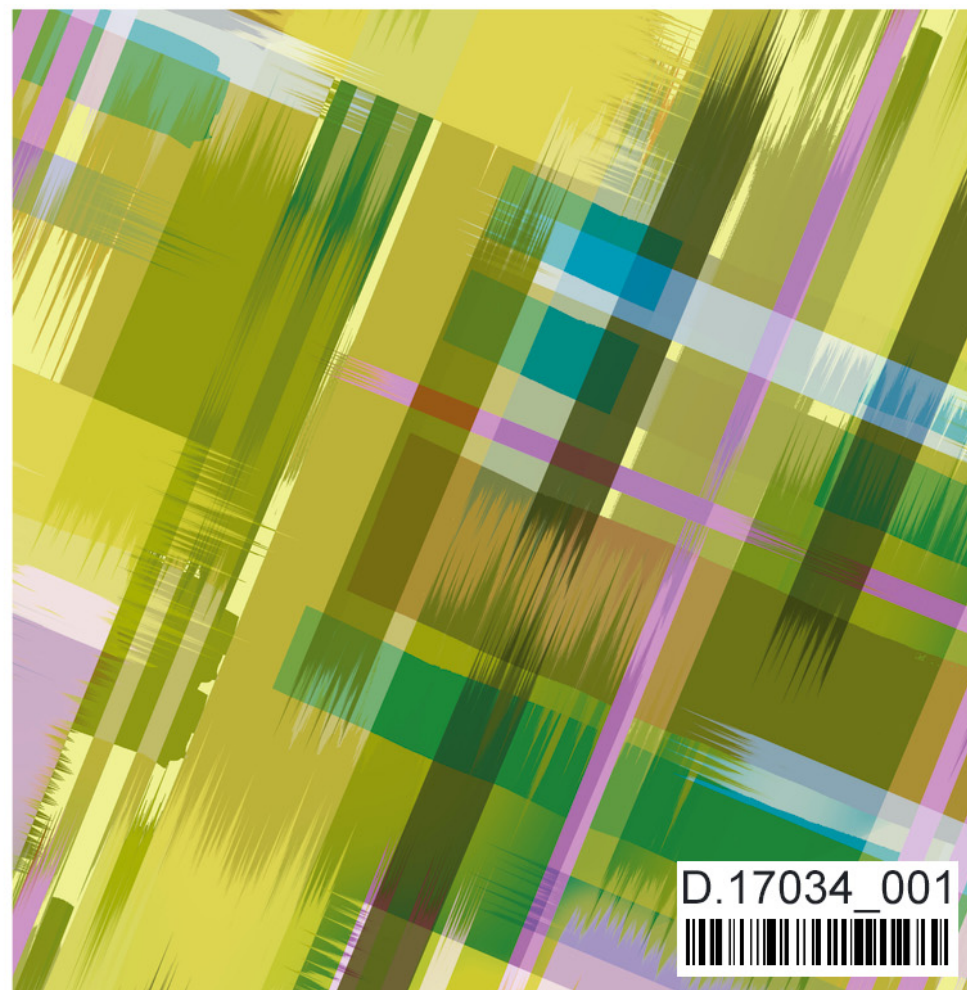
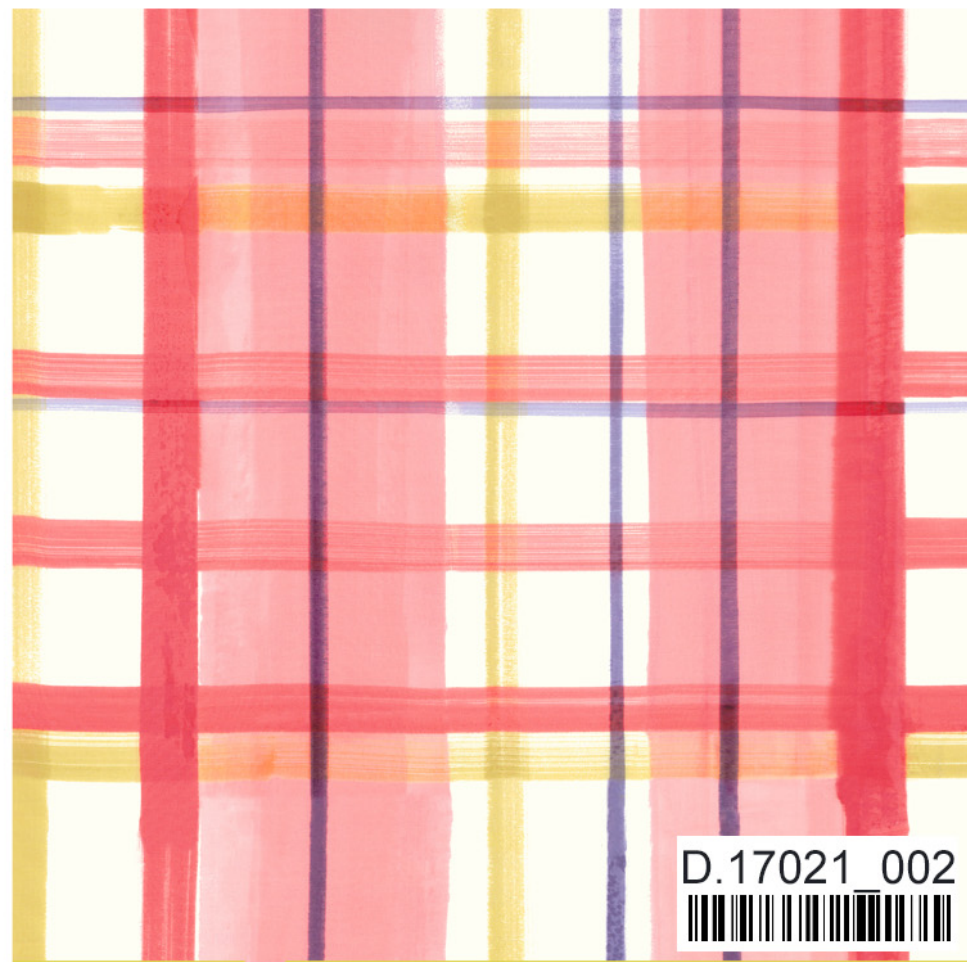
JOHNSON'S PICTURES
PLACES OF INTEREST

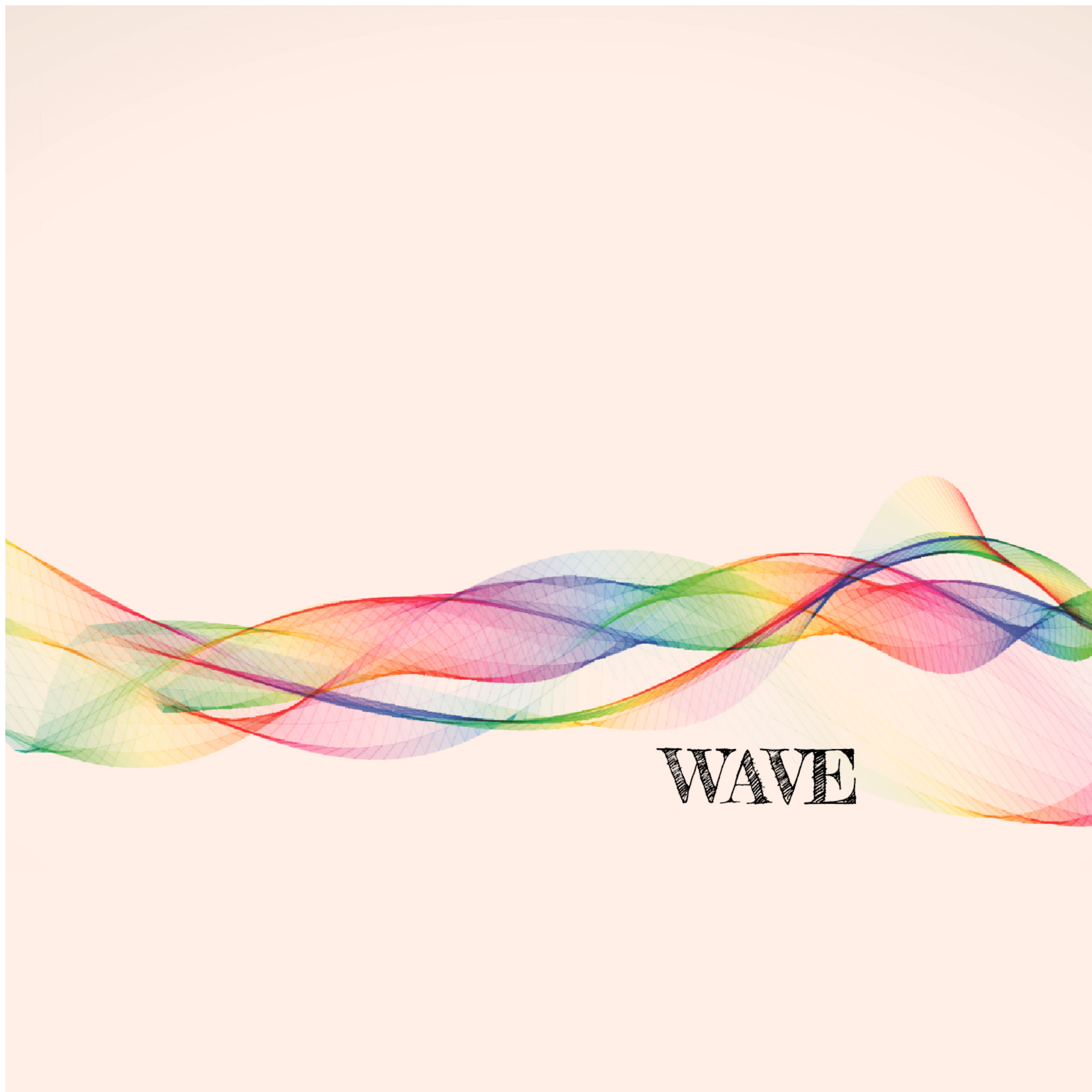


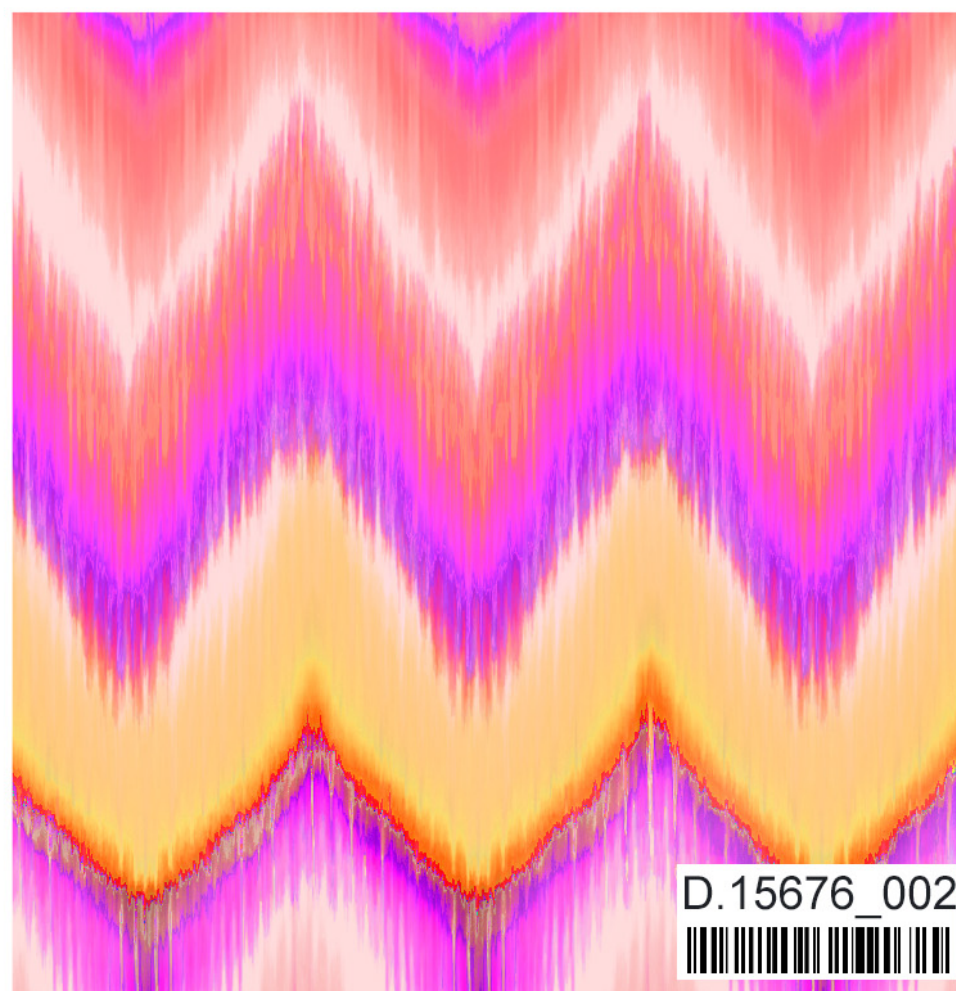
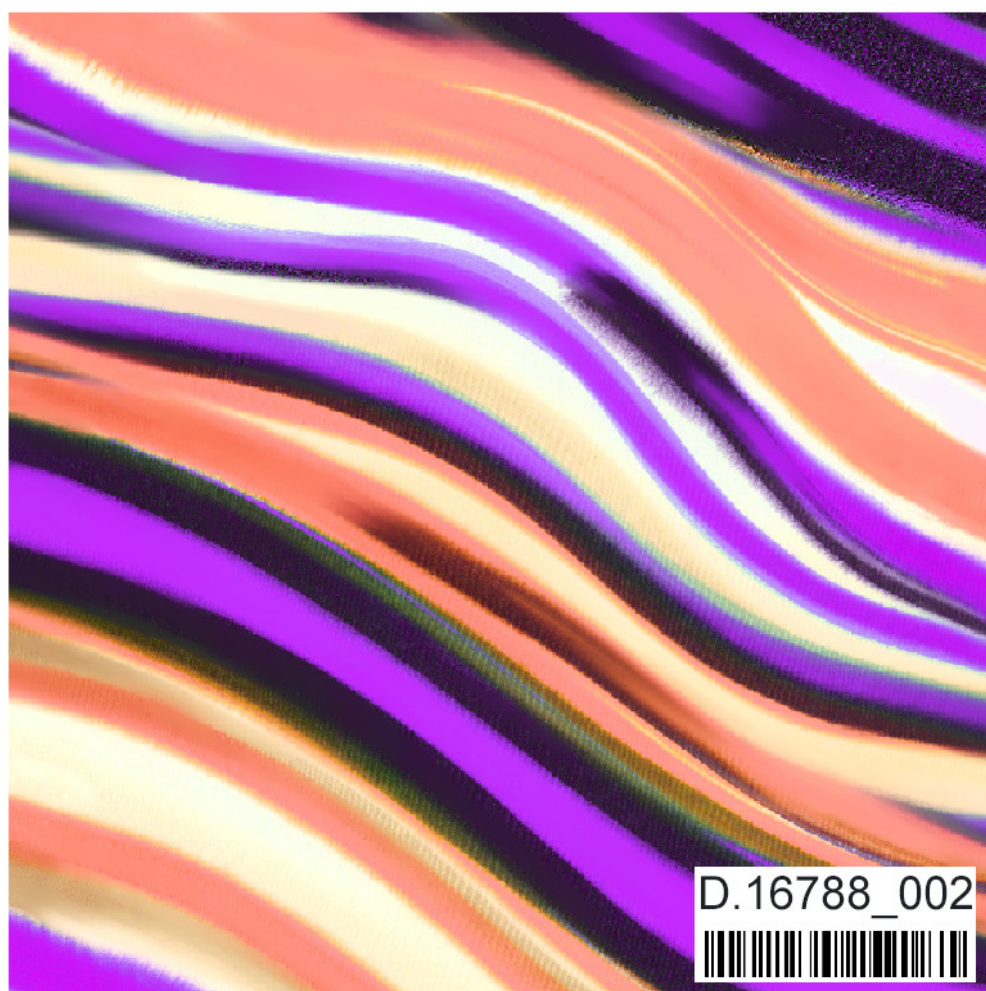
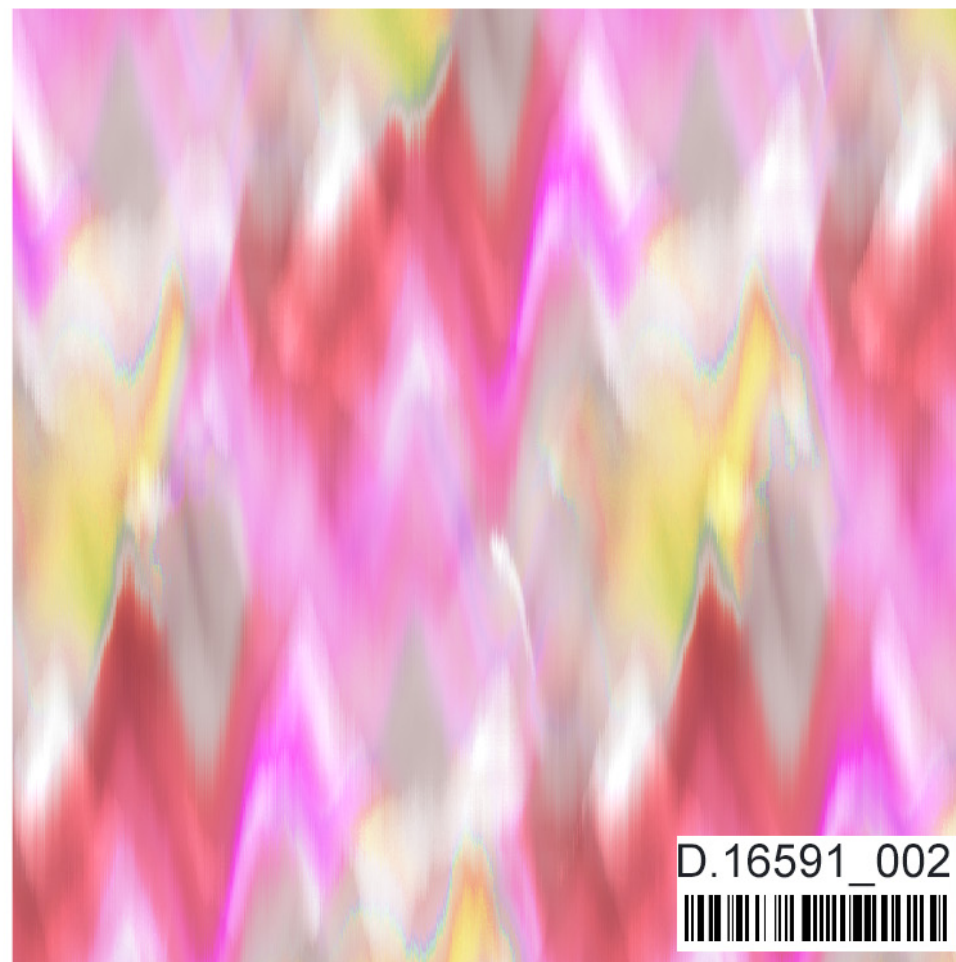
of the sixteenth century. The church was formerly dedicated to St. Mary and formerly contained the one dedicated to St. John. After the reformation their endowment was given to enable him to establish a school of the town. It occurs in the interior; the church is directly facing the tomb of the learned Judge



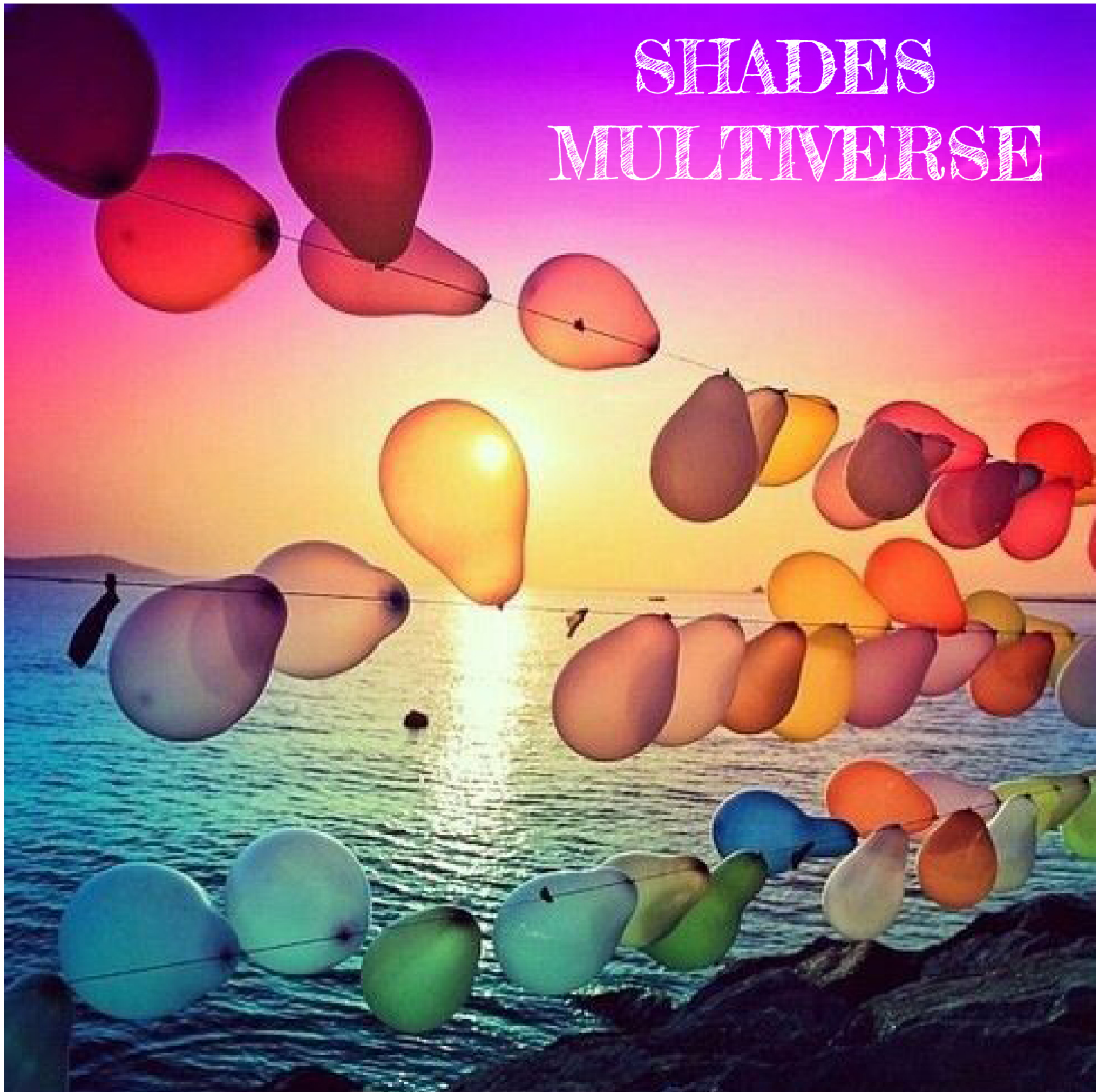
CROSSING LINES

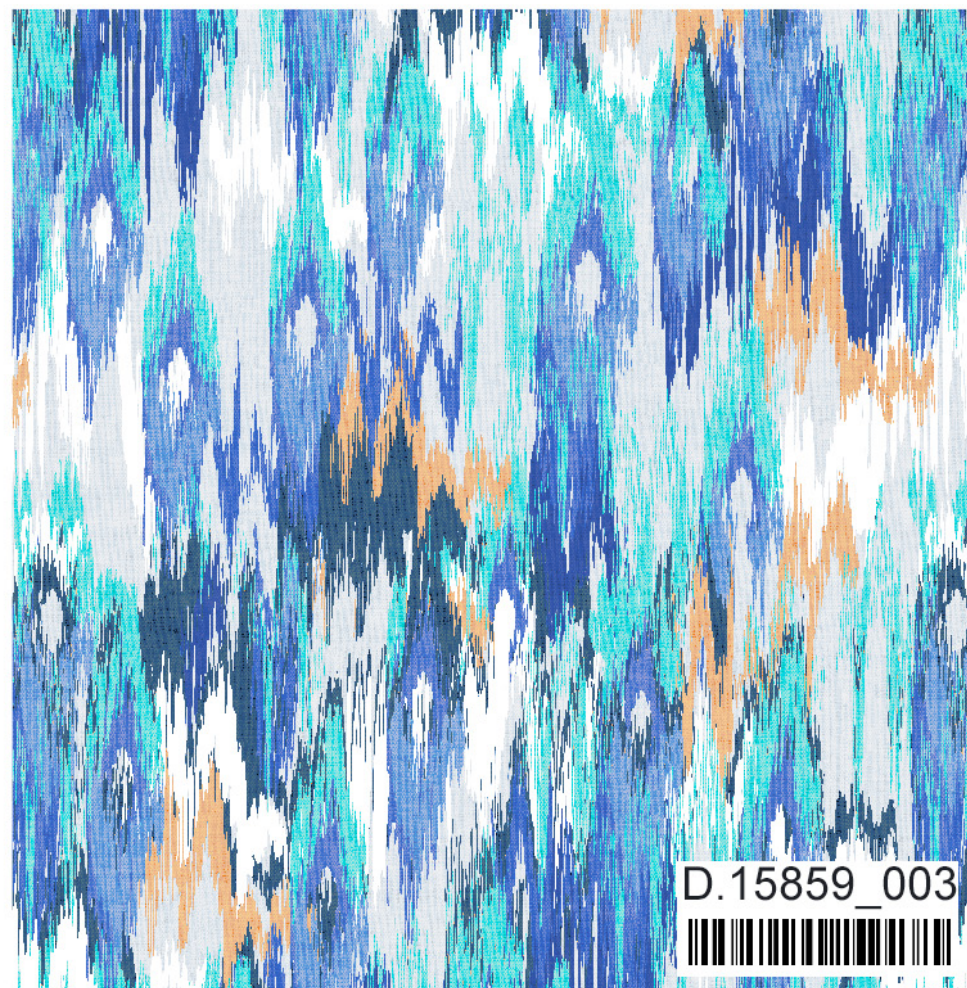
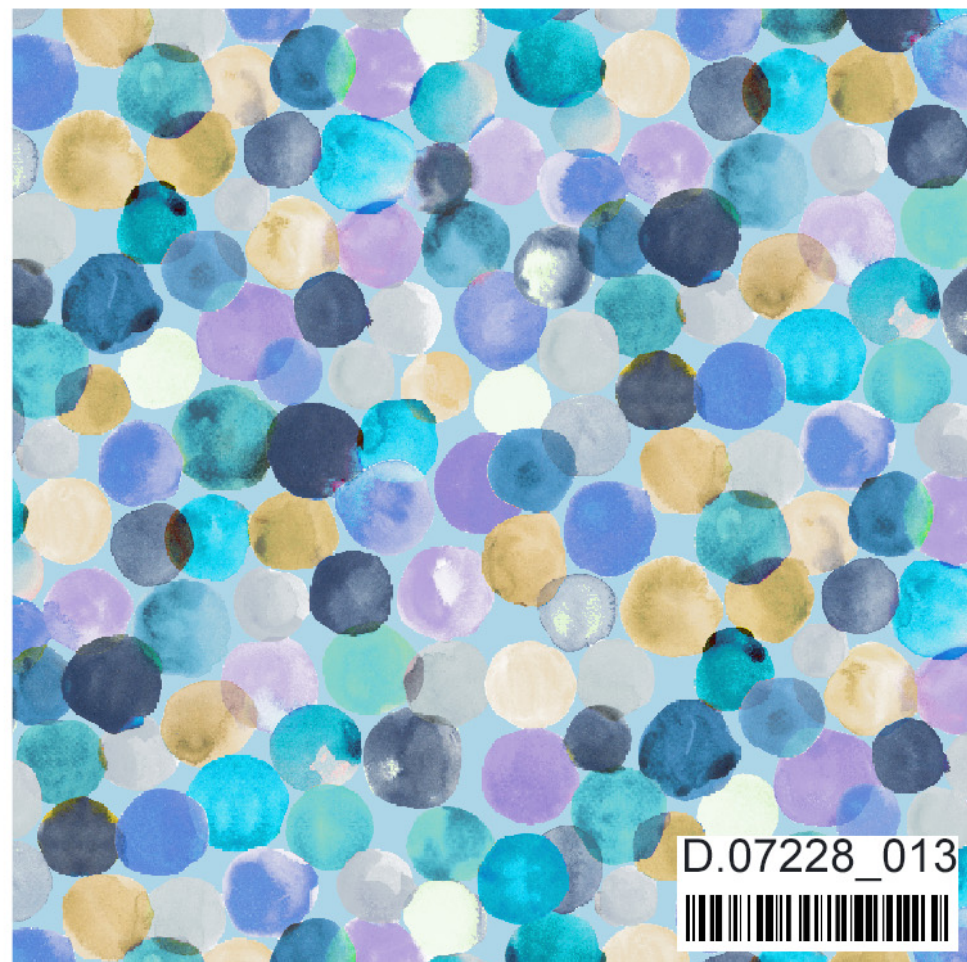






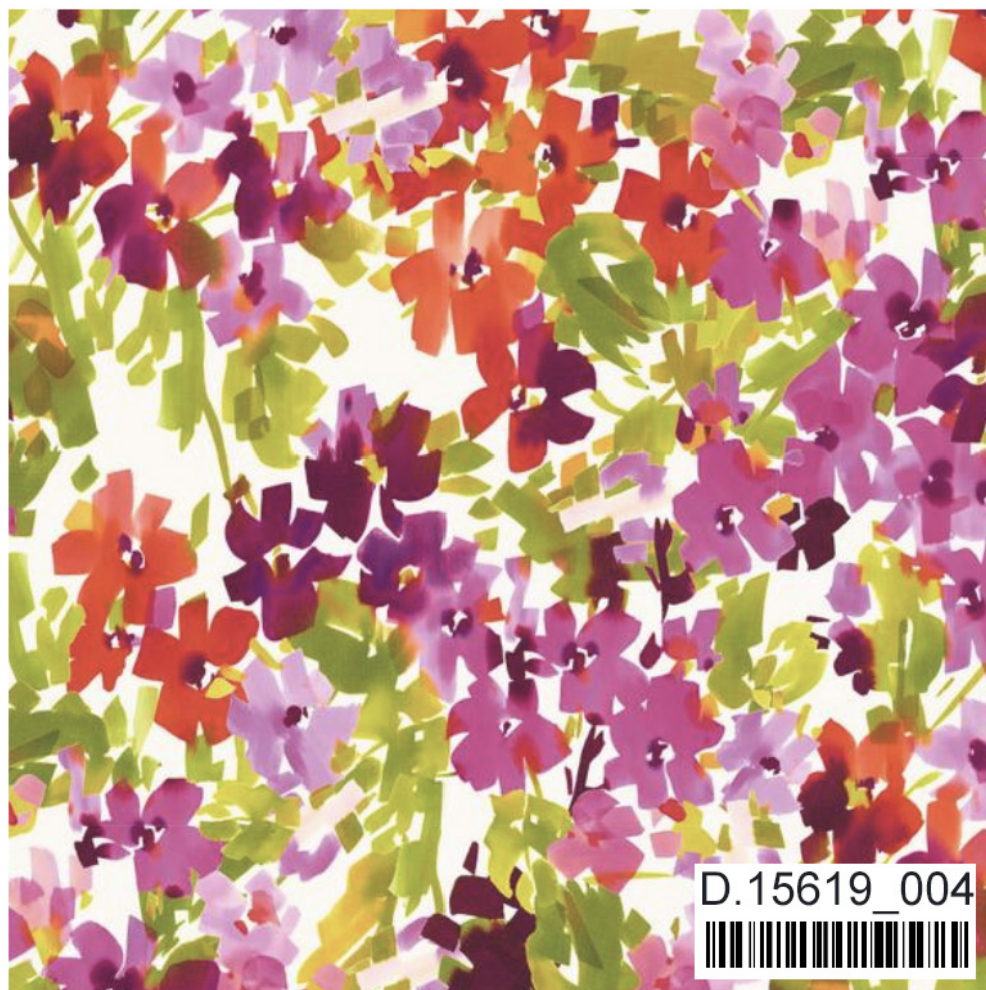
SHADES MULTIVERSE







FLOWERS



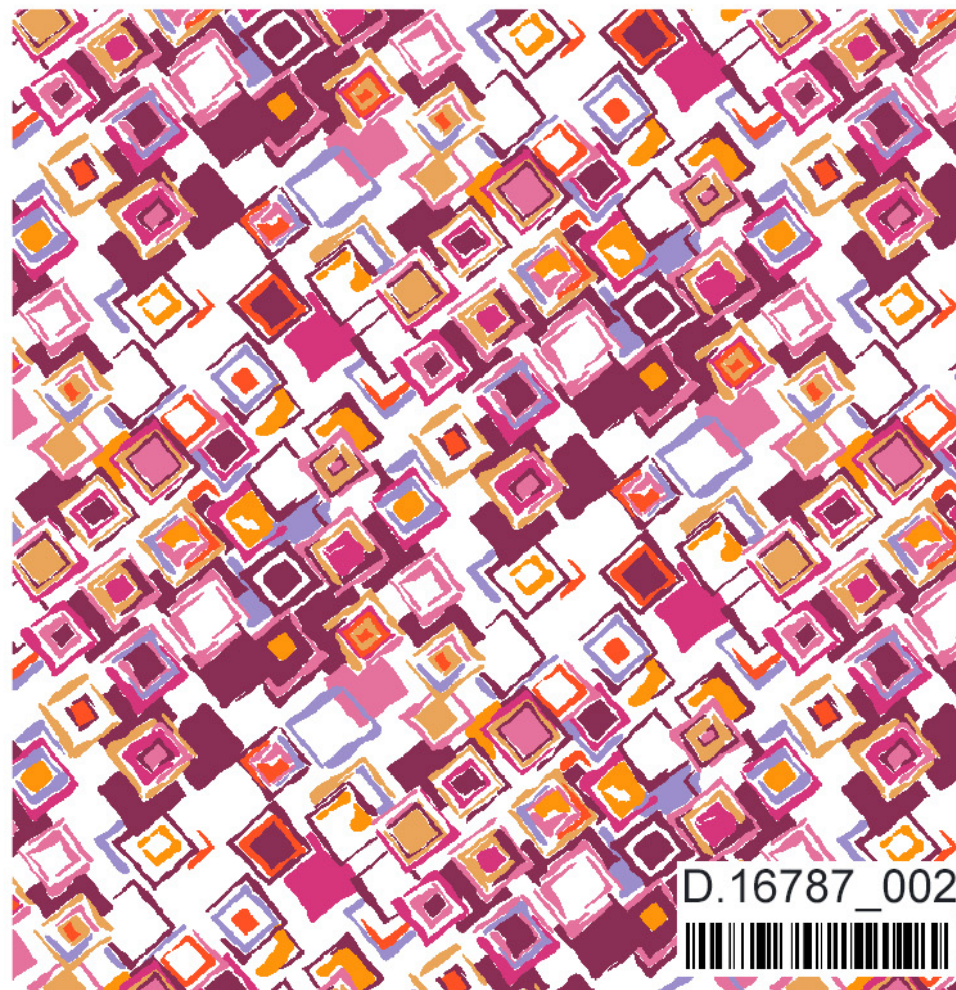
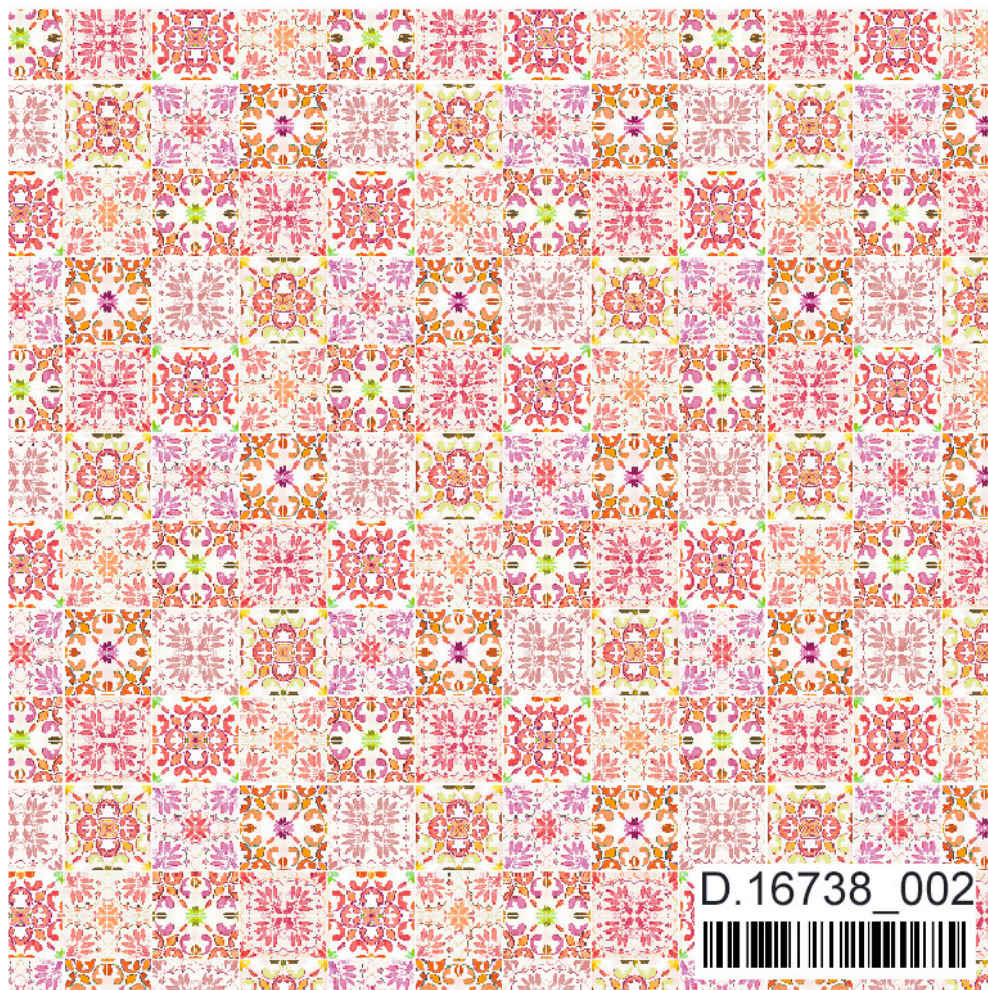
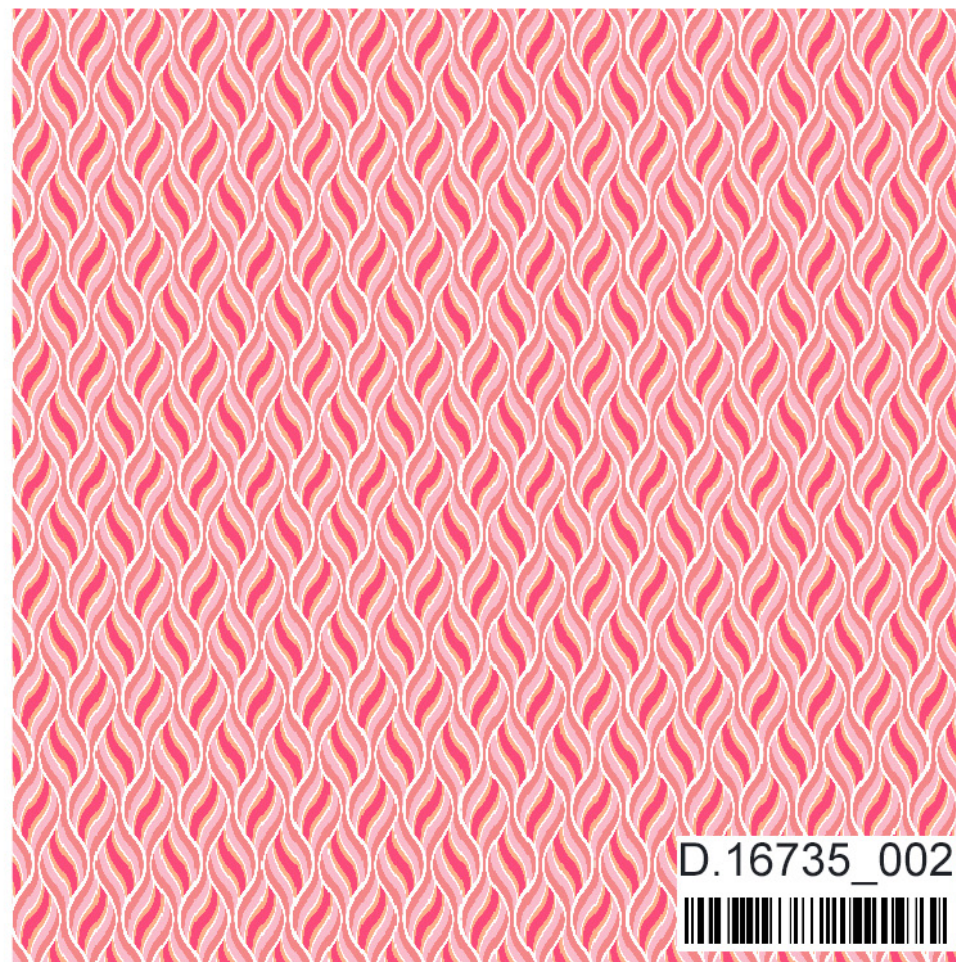
FUNNY
LAND





FANCY MICRO





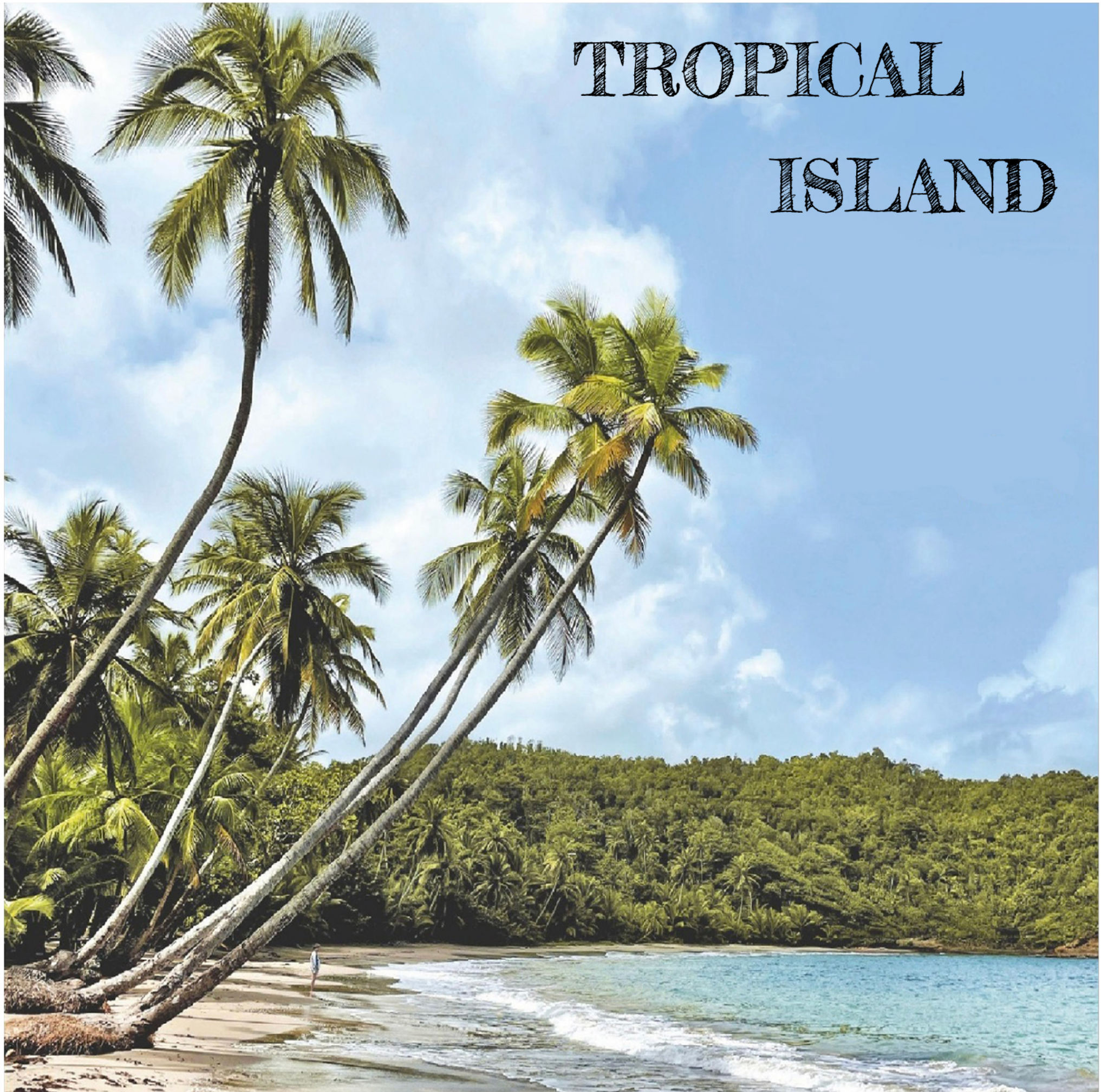


ESCAPE LAND

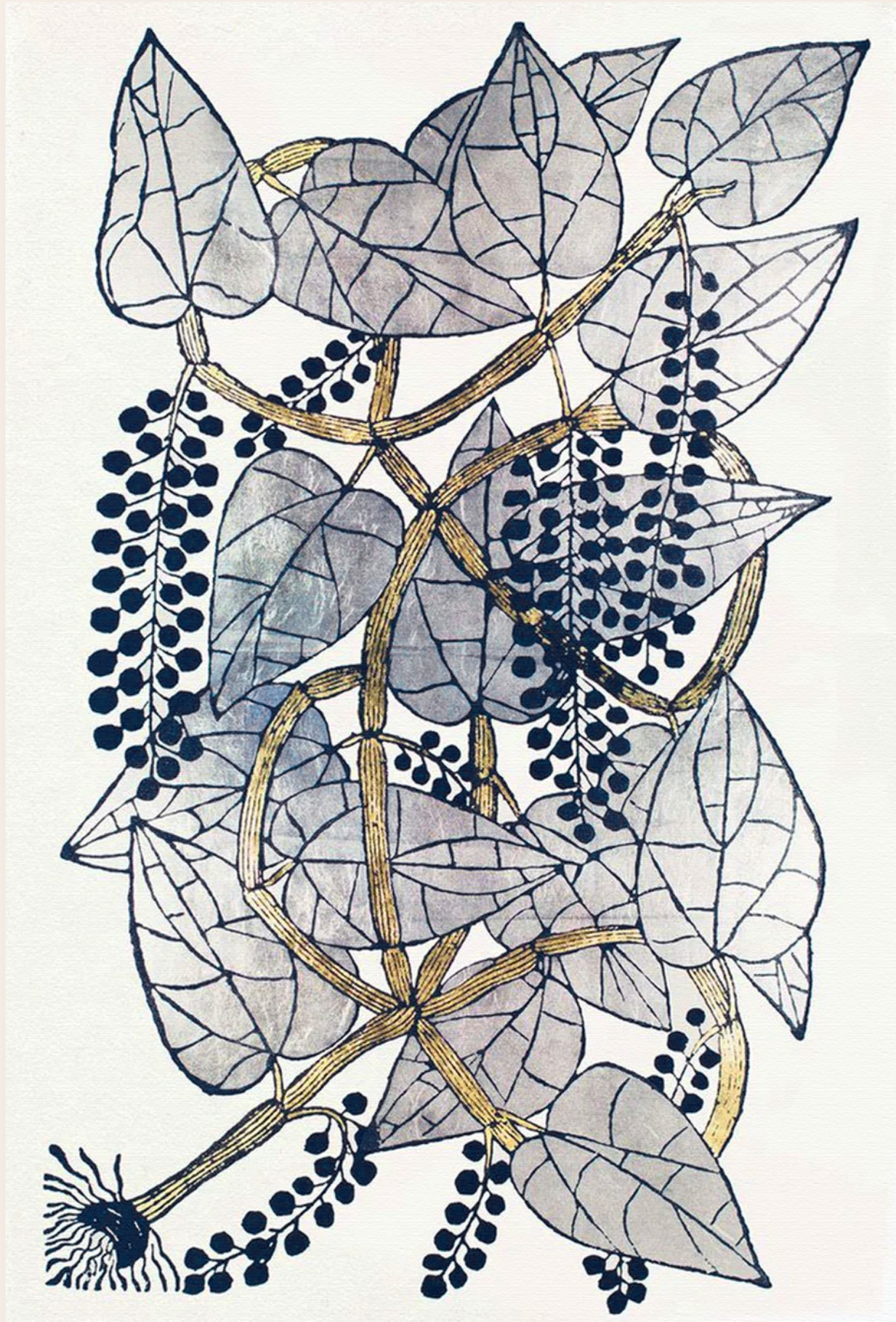




TROPICAL ISLAND



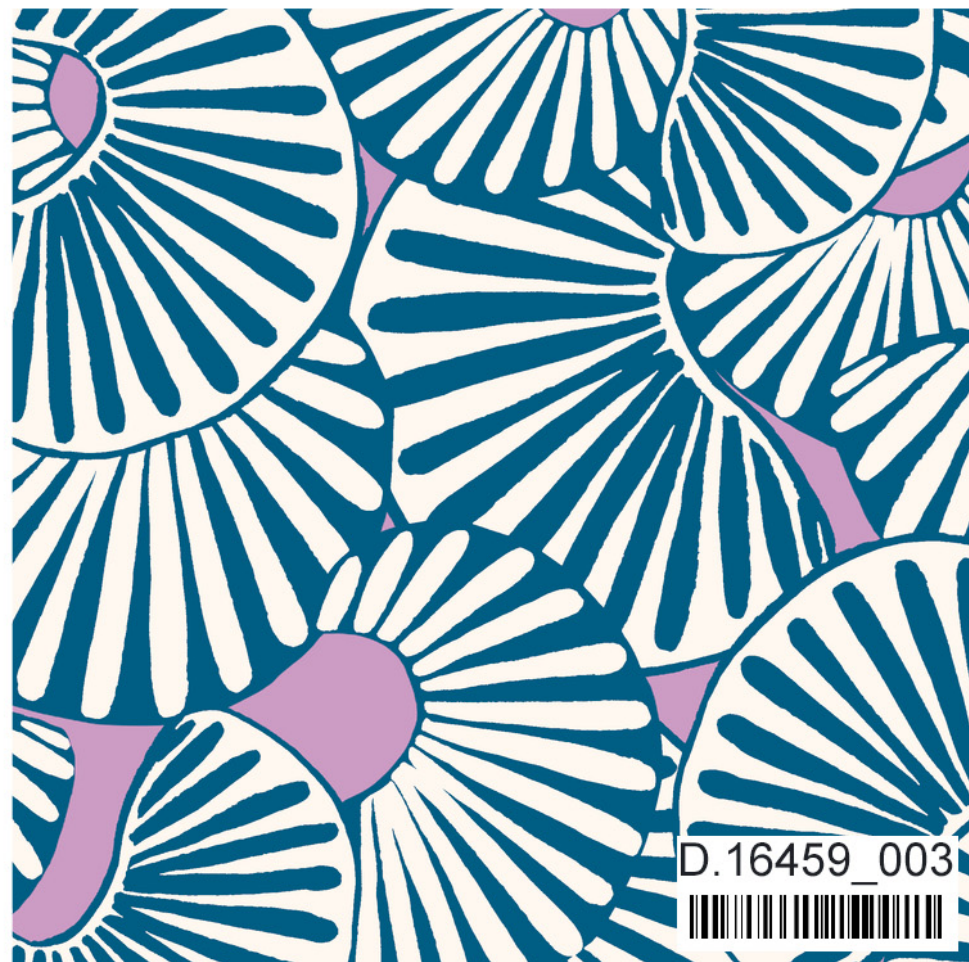




ART & CRAFT



D.16060_001



D.16459_003



D.16194_003



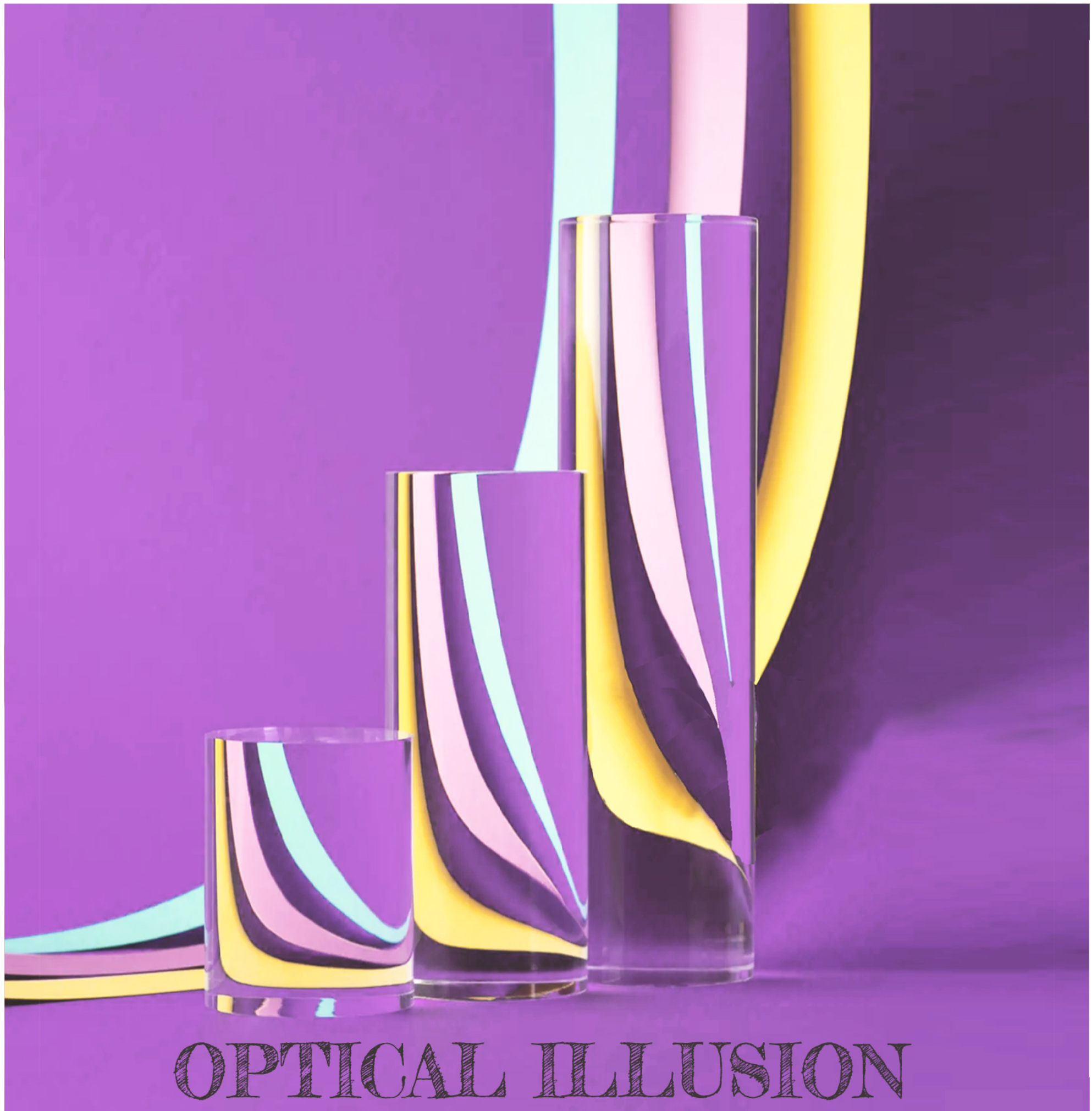
D.16025_001



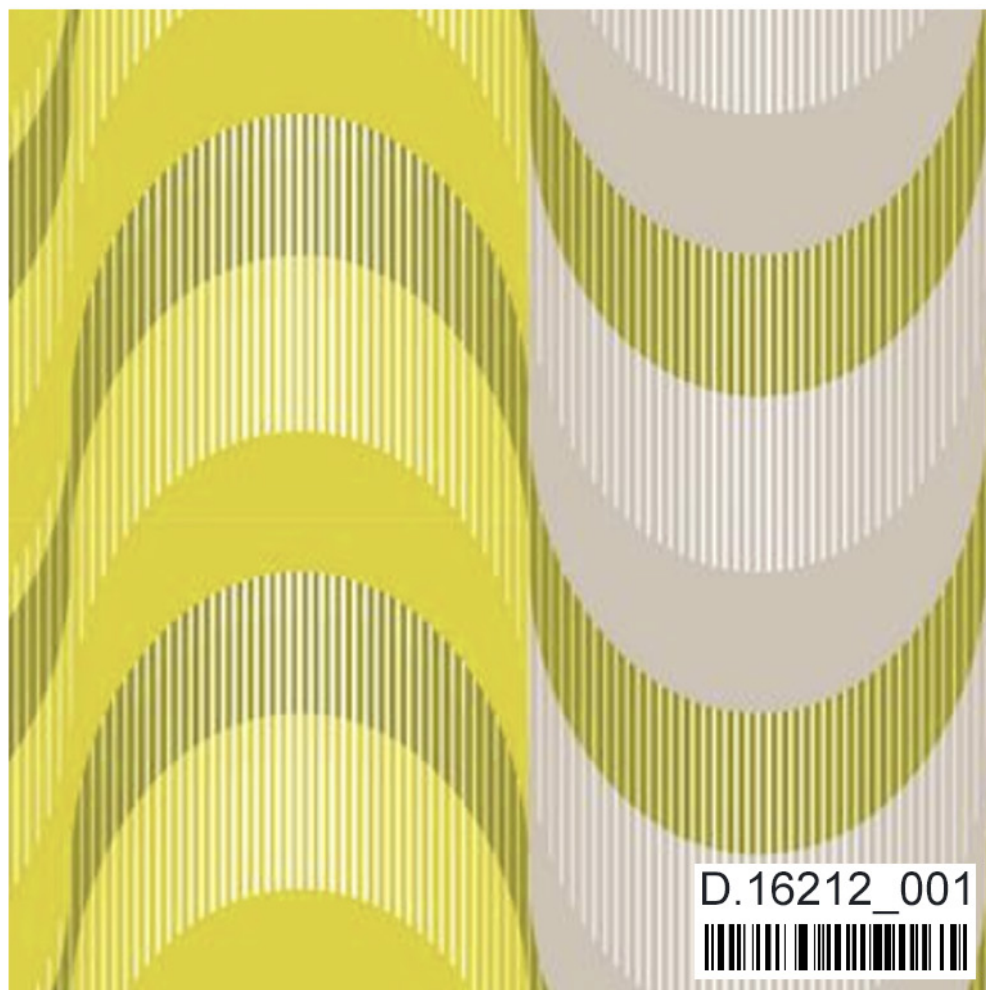
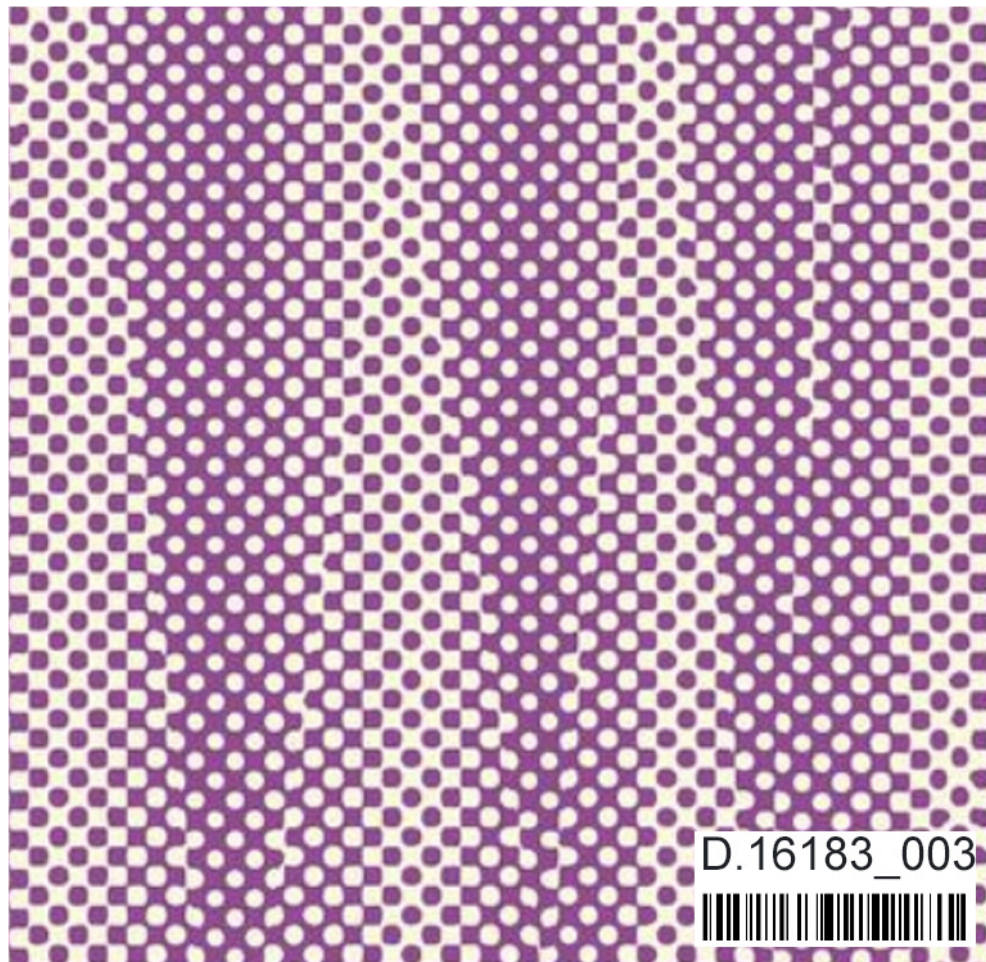


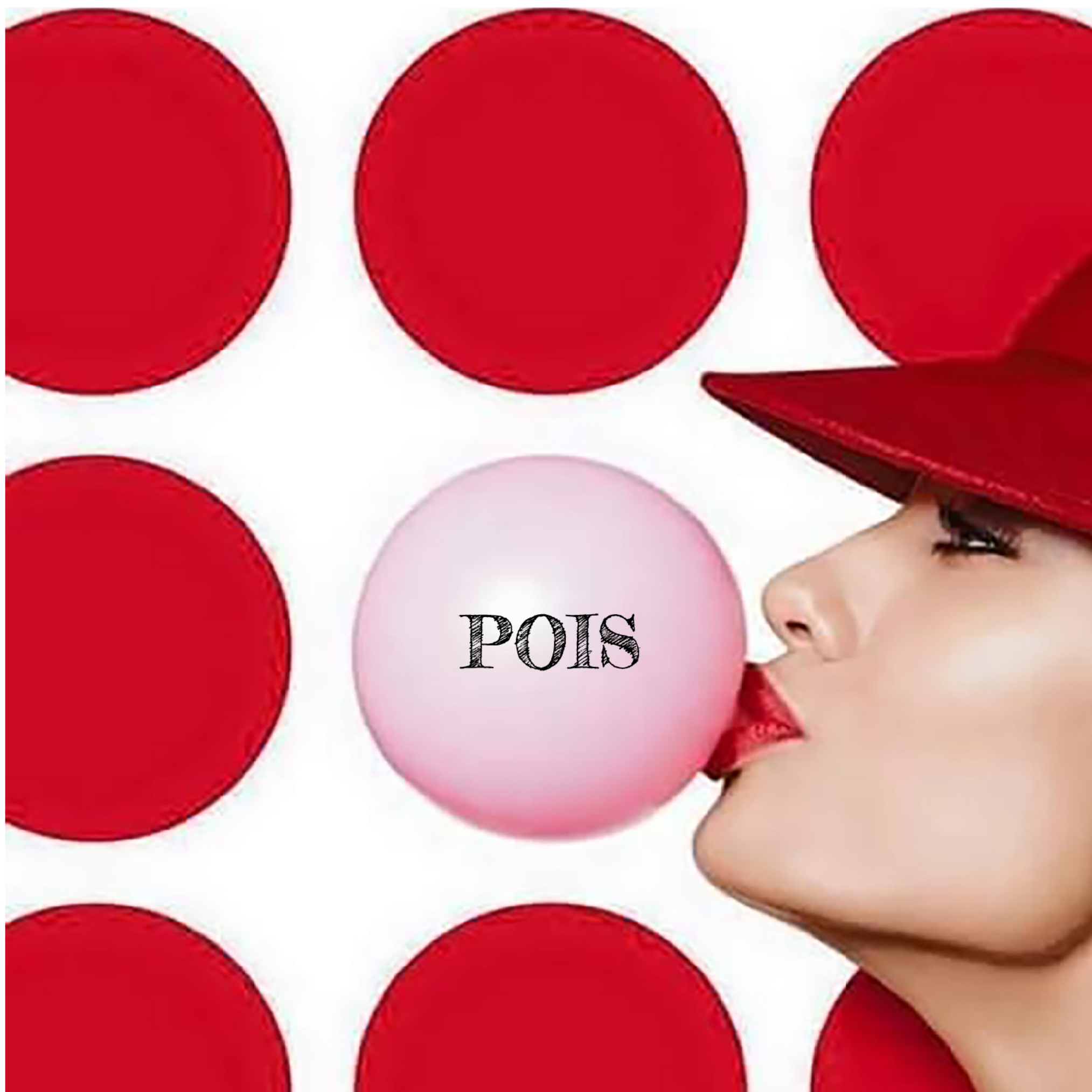
HAPPY
SEVENTIES

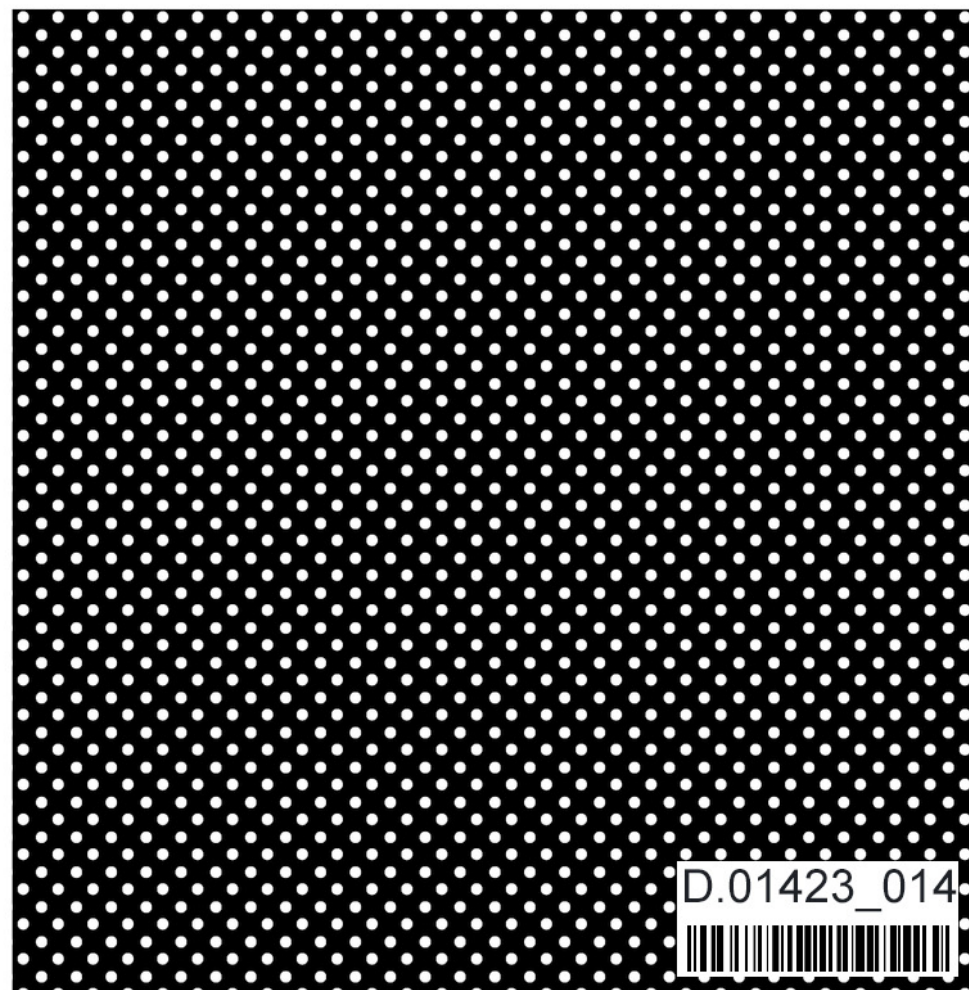
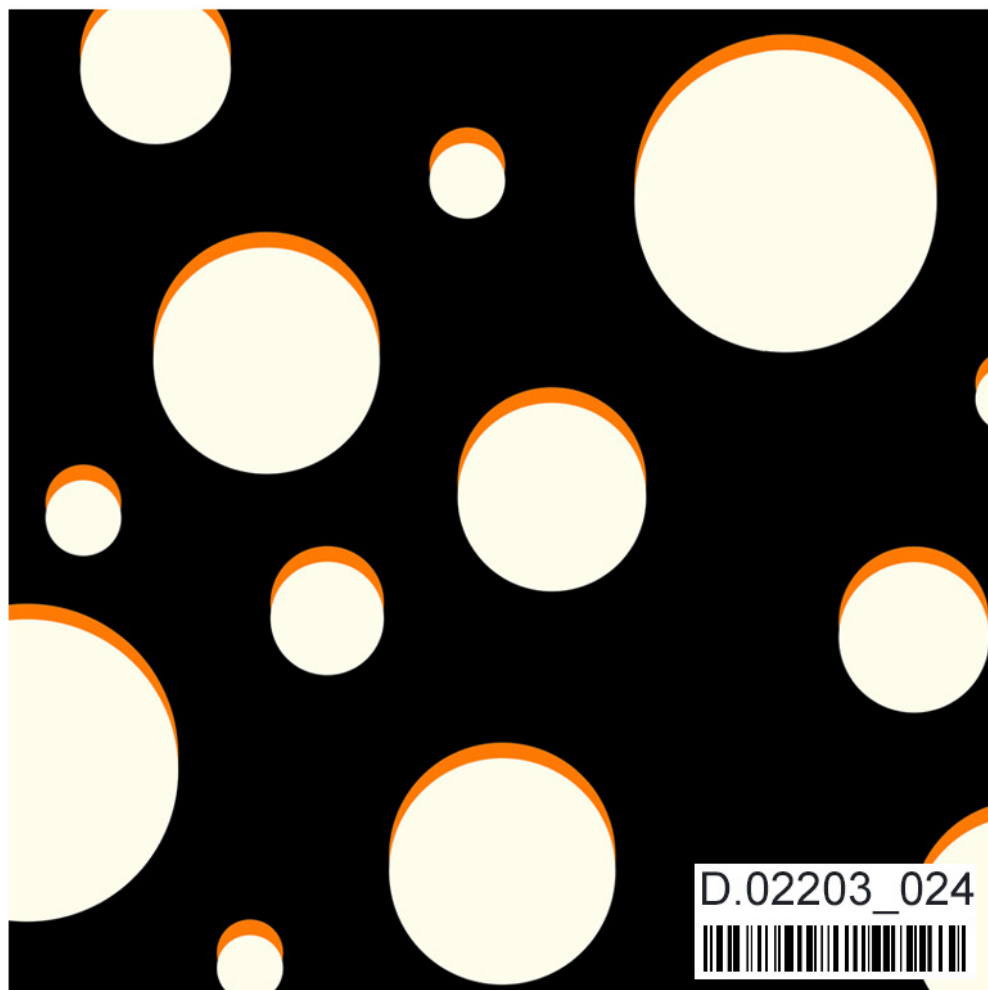
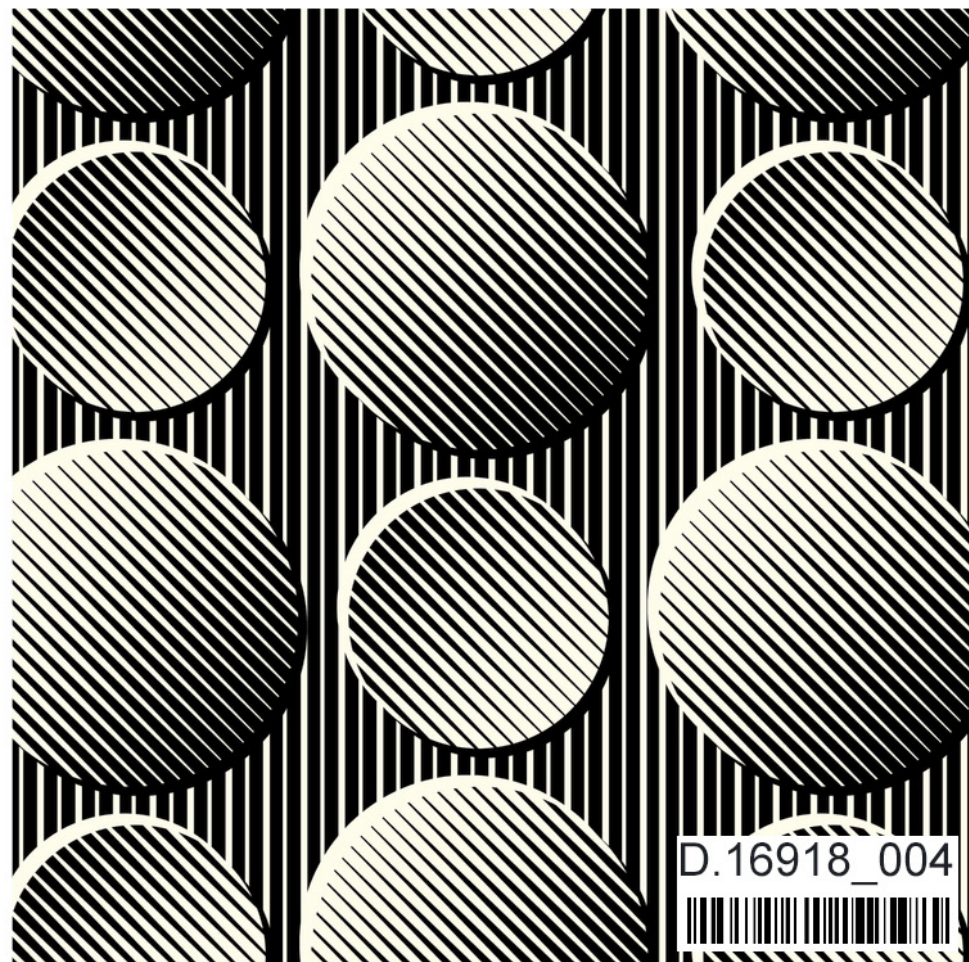
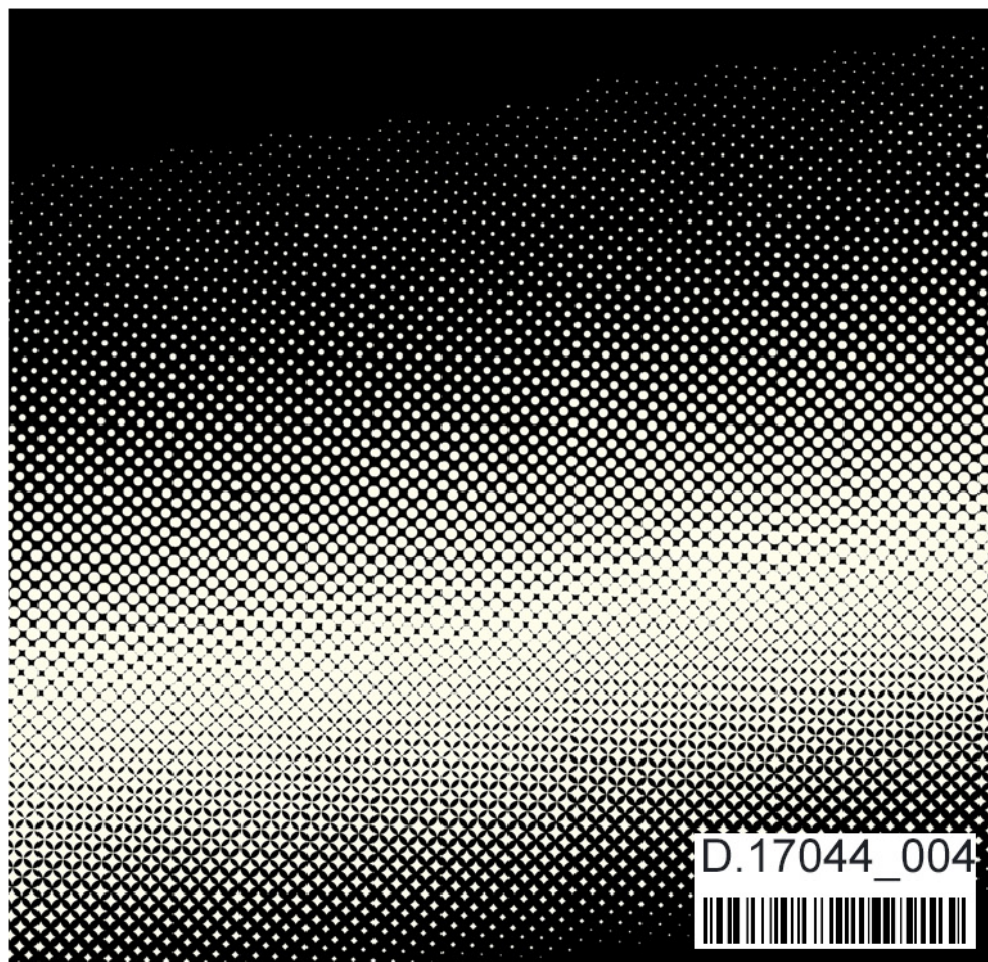




OPTICAL ILLUSION

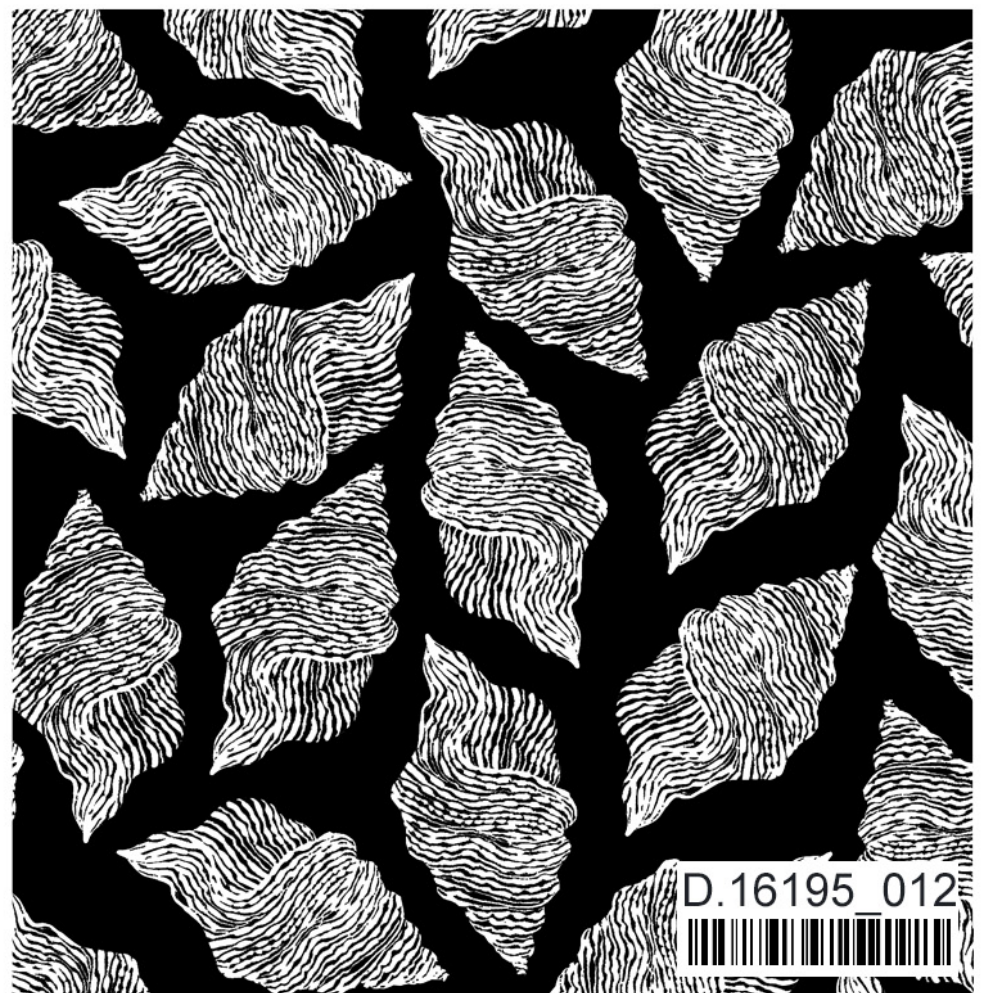


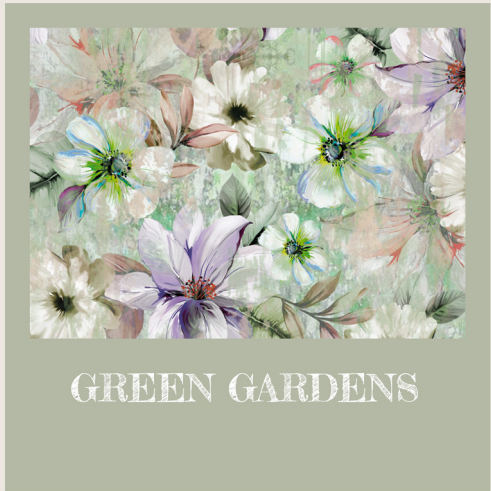




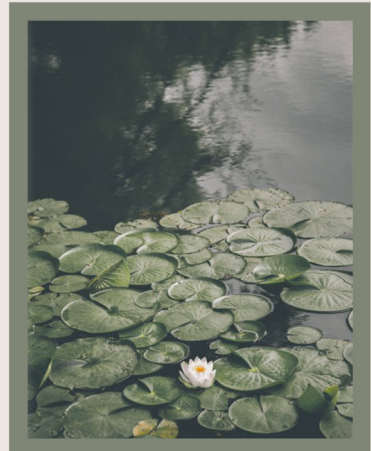
BLACK
&
WHITE



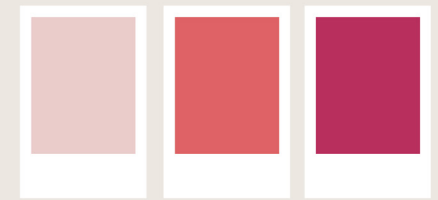




GREEN GARDENS



SOFT PINKS



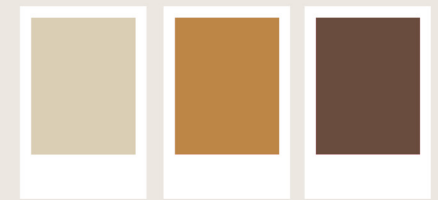
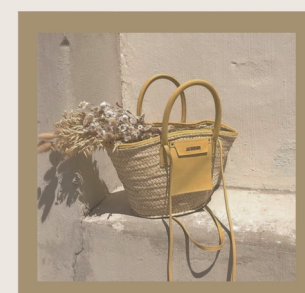
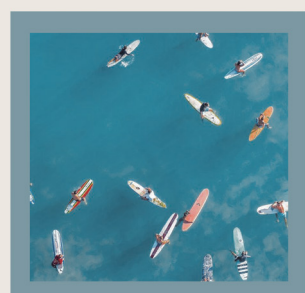
SUMMER COLORS 2025



CELESTIAL BLUE



LUXURY NEUTRALS





DIGITAL PRINTING 

E.MIROGLIO SRL	E.MIROGLIO EAD
Uffici Italia: Loc. Carretta, 2	Uffici Bulgaria: Industrial zone, P.O. Box 161
12040 PIOBESI D'ALBA (CN) - Italia	8800 Sliven - Bulgaria
Tel. +39 0173 610213 - Fax +39 0173 619923	Tel. +359 44 500899 - Fax +359 44 500774
P.IVA IT 03021340041	VAT BG 119603547
Mail: creste.brignolo@emiroglio.com	
Web site: www.emiroglio.com	